



FAIRFIELD PRIMARY SCHOOL

Tautapatia te pono - Dare To Be True

260 Clarkin Road, Hamilton
P.O. Box 12383, Chartwell
Hamilton 3248

Phone: 07 855 6284 | Fax: 07 854 8917
Email: ffield@fairfieldprimary.school.nz
Website: www.fairfieldprimary.school.nz



Student Name: _____

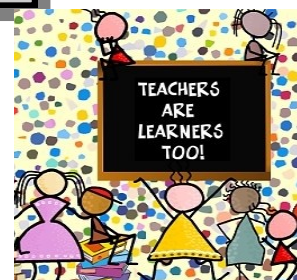
Room No: _____

Newsletter No 4: 14th May 2021

Dear Parent / Caregiver,
Kia ora, Malo e lelei, Talofa,

IMPORTANT NOTICE - TEACHER ONLY DAY - Friday 4th June

There is no school on Friday 4th June. Our teaching staff along with the majority of teachers from primary schools in the north east of Hamilton will be attending a professional development course. Note also that Monday 7th June is Queens birthday weekend, making it a 4 day weekend.



PINK SHIRT DAY - Friday 21st May - Speak up, Stand together, Stop bullying

Next Friday we encourage everyone to wear "Pink" to make a bold statement against bullying. Certificates and spot prizes up for grabs for those who support this day.

STATIONERY

It is of concern that we are now in Term 2 and still have a considerable number of students whose stationery has not yet been paid. Stationery is not funded and is not free. We must continue to pursue payment to reduce this debt. If you receive an invoice, the expectation is that you pay it. Small weekly payments are acceptable.

JUNIOR SCHOOL TRIP TO THE WAIKATO MUSEUM

As part of the junior school's term 2 topic study "Kitchen Science", rooms 5,8,9,10 & 12 will be visiting the Waikato Museum.

Friday 21st May	Room 8 & 12	Leaving school at 9:15am and returning at lunchtime.
Monday 24th May	Room 5, 9 & 10	Leaving school at 9:15am and returning at lunchtime.



The "PINK" consent and health forms must be filled out, signed and returned to school prior to trip day.
NO CONSENT = NO TRIP!

MIDDLE SCHOOL TRIP TO EXTREME EDGE

A trip to Extreme Edge rock climbing for rooms 2,3,7,16 & 17 is in the final stages of planning. Classes will be going on either 27th or 28th May. There will be no cost - however consent & health forms will need to be returned to enable children to go. A detailed notice will come home early next week with the health/consent form and the day/time these rooms will be going.

ST PAULS 'OVER THE FENCE' PROGRAMME

"Over the Fence" is a service programme which is now in its 6th year. A number of St Paul's students give up their spare time to assist with lunchtime sports, read, or simply interact with children from local primary schools, just over the fence from their own school. Earlier in the week, our senior classes were invited to St Paul's to kick off the programme for 2021. Our seniors were treated to a yummy morning tea. Our school was also very fortunate to be presented with a \$4500.00 donation. The funds from this donation came from the St Paul's gala. Thanks St Paul's for all your support - we look forward to our continued partnership during the year.

HEALTH AND PHYSICAL EDUCATION CONSULTATION

Every two years, our school is required to consult with the community regarding what we teach in the health and physical education curriculum.

In health and physical education, the focus is on the well being of the students themselves, of other people and of society through learning in health-related and movement topics.

The key areas of learning are:

- Personal health and physical development
- Movement concepts and motor skills
- Relationships with other people
- Healthy communities and environments

Learning about pubertal change begins at Curriculum level 4 (Years 5&6). Parents will be notified well in advance and have the option to withdraw their children from pubertal change sessions.

Should you wish to view the entire Health and Physical education curriculum, please ask at the office.

PHOTO DAY - Wednesday 23rd June

Photolife studios will be at our school in 5 weeks time to take class photos.

We expect to receive the pre-paid order envelopes by the beginning of June and will send these home as soon as they arrive.





STUDENT LEADERS

Congratulations to Maddix, Miracle, Wharenikau T, Faith, Lewis and Timatanga who have all been selected to represent our school as student leaders for 2021.

We look forward to seeing your leadership qualities flourish throughout the year.

BASKETBALL AND NETBALL TEAMS

All of our teams have been training hard for the winter sports season.

Our basketball teams began playing this week and our netball teams first games are next week.

We wish all our players an enjoyable season as they represent our school and look forward to celebrating their growth and achievements.

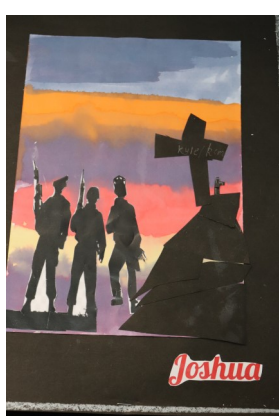
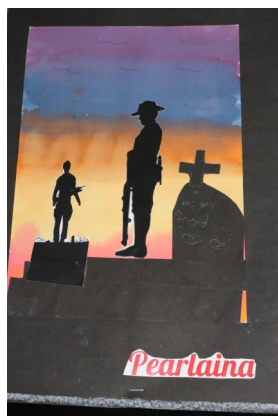
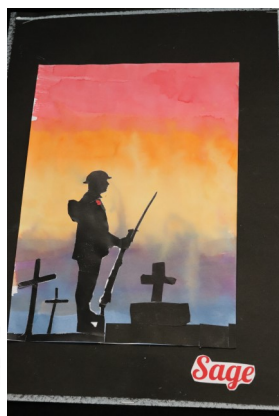
We remind parents and caregivers to ensure positive support and encouragement is provided at all times towards players, coaches and officials.

Due to very high demand this season, there were a few netball players who we were unable to place in a team. These players have been invited to participate in a skills based programme which will be held at school on a Monday after school. This programme is also for Year 3 students who are looking to play Netball in 2022. Spaces are limited and as this Newsletter went to print, there are only 2 spaces left to fill.

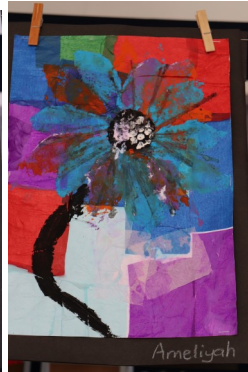
Room 20 & 21 ANZAC art

LEST WE FORGET

"At the going down of the
sun and in the morning,
We will remember them"



Glue,
tissue paper,
paint, sponges
and bubble
wrap are all
mediums
which have
been used to
create this
striking
flower art in
Room 16.



Magic of Autumn

The leaves fly so high in the sky,
I try to fly, but I sigh and cry,
that's right, I can try to fly.

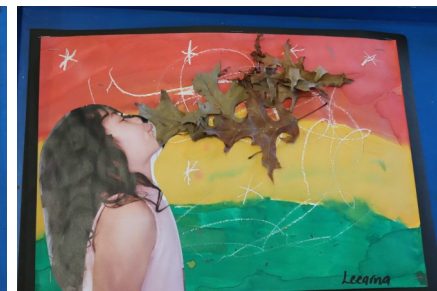
Crunching munching on
the beautiful leaves.
The breeze picks me up, now I can see...
A bunch of leaves that make me sneeze!

By Daezarn - Room 15



Jacinta, Tomasi, Dontaay, Kairangi, Leo,
Amazon & Tamehana.
Welcome back to Lee, John, Kim, Ryan &
Ataahua.

Room 10 Autumn art



Like or follow us on Facebook

Facebook is now our school's preferred means of communicating notices and events. If you have not already done so, please find us on facebook by searching our user name @FFieldPrimary. This will ensure you keep up to date with what is happening at school.

Kind regards

Anne Johnson
PRINCIPAL

Proudly supporting our local School

Local childcare with a difference

First Steps Donny is known for its home-like environment. Our warm and nurturing centre offers the perfect environment for your child to flourish. Come and see for yourself!

- ✓ Child care and education from birth to 5 year olds
- ✓ Nutritious meals prepared on site every day
- ✓ Qualified and nurturing teachers
- ✓ Swimming lessons and music classes
- ✓ Centre set up to encourage exploration and discovery



First Steps Donny
2 Donny Ave, Chartwell
Phone: 855 0666
www.best-start.org

BestStart for happy, confident learners

**2 PAIRS
KIDS GLASSES
FROM \$169***
NOW INCLUDING

FREE EYE EXAM
FOR UNDER 16'S

FREE
SUPERTOUGH
LENS UPGRADE**

Specsavers Chartwell
Westfield Chartwell S/C
Cnr Hukanui & Comries Rds
(Opposite Farmers)
853 6909



*Price complete with standard single vision lenses with scratch resistant coating. Second pair must be from same price range of frames and lens range or below. Must be same prescription. Price for other lens types may differ. Extra options not included. Price correct at time of print. Frames available while stocks last. **Free SuperTough lens upgrade only available with standard single vision glasses for kids under 16. © 2013 Specsavers Optical Group.



MILLERS FOUR SQUARE
1030 Heaphy Terrace
07 855 3957

Opening hours
Mon – Fri 7.30am – 8.00pm
Sat – Sun 8.00am – 8.00pm

EXCELLENCE IN ANIMAL CARE

We comply to NZVA
Best Practice Standards
of Care

Wide range of veterinary
services including
referral surgery

Convenient opening
hours and superior
customer service.

independently owned
and operated



**HAMILTON
VETERINARY
SERVICES**

421 Te Rapa Rd,
Hamilton

07 849 2963

www.hamiltonvets.co.nz



MEGAZONE
LASER GAMES

a. 42 Sunshine Ave, Te Rapa, Hamilton
w. www.megazonehamilton.co.nz
e. info@megazonehamilton.co.nz
i. #megazonehamilton

LASER TRAP LASER TAG

07 850 4222



Hamilton's
1st
Trampoline
Park

07 850 4222

info@leapnz.co.nz
www.leapnz.co.nz
42 Sunshine Avenue
Te Rapa, Hamilton

Locally built, owned & operated



Oxford Takeaways



Hours:
Sunday-Friday 11am-8.30pm
Saturday 4pm-8.30pm

4 Oxford Street
Fairfield, Hamilton

Ph: 07 855-7173
oxfordtakeaway@xtra.co.nz

Fresh NZ fish ~ Cooked to order!

**Maths and
English**

Let Kip McGrath teachers
create individual programmes
to boost your child's success
at school.

Maths Reading English Spelling

Call today for a
FREE assessment

kipmcgrath.co.nz

Call Paul, Hamilton East
(07) 853 5013



**Peter Granville
& Associates Ltd**



Chartered Accountants & Business Advisors

180 Grey Street
Hamilton, New Zealand
PO BOX 4169
Telephone 07 8561400
Facsimile 07 8561407
Email info@pmgranville.co.nz

firstcredunion.co.nz



**school
banking**

proud to offer banking services to
the children of Fairfield Primary School

Not a registered bank. First Credit Union deposits are shares secured by a first ranking registered Trust Deed. A Product Disclosure Statement is available

not a member?
pick up a start-up
pack from your
school office

**first
credit
union**

111 COLLINGWOOD STREET, HAMILTON P 07 834 4810

REDGATE NEWSLETTERS Professional, vibrant newsletters, free for schools Contact admin@redgateneletters.co.nz